

Model 5200

Label Printer-Applicators



Weber

LABELING & CODING SOLUTIONS

New And Improved

To Provide The Best In High-Speed Label Printing

Weber Marking Systems' Next-Generation Has It All!

- ◆ Choose from 203- or 300-dpi print engines
- ◆ Print pressure-sensitive labels up to 6.0" wide and 6.0" long
- ◆ Speeds up to 12.0" per second
- ◆ Three different application methods

For nearly seventy years, we have helped our customers meet all of their labeling and coding needs. We've applied that experience to creating our new line of Model 5200 Series label-printer applicators.

Designed, engineered, and built by Weber, these systems provide high-quality printing, precise application, and unprecedented versatility – all at an economical price.

Offering a wide range of on-demand printers — from renowned vendors such as Zebra and Sato — the new Model 5200 Series provides crisp text, in-spec bar codes, and eye-catching graphics at 203- or 300-dpi resolution.

Depending on the print engine, the Model 5200 Series outputs pressure-sensitive labels from 1.0" to 6.0" wide and up to 6.0" long. The systems can keep pace with high-volume, high-speed production lines with label print speeds varying from 5.0" to 12.0" per second. For various printer specifications, please see the back page.

Application Methods

All Model 5200 Series systems print labels in a next-

out mode, offering a choice of one of three different application methods: tamp-blow, Weber's exclusive Flex-Tamp, or air blow.

Tamp-blow provides precise application without product contact. The label is printed, peeled away from the liner, and held by a vacuum on the applicator pad. As the product or carton moves by, the applicator extends to within 0.25", gently blowing the label onto the surface. The applicator then immediately retracts to receive the next label.

Available only from Weber, the Flex-Tamp applicator functions in a similar manner to the tamp-blow, but makes gentle contact with the carton or product as it passes.

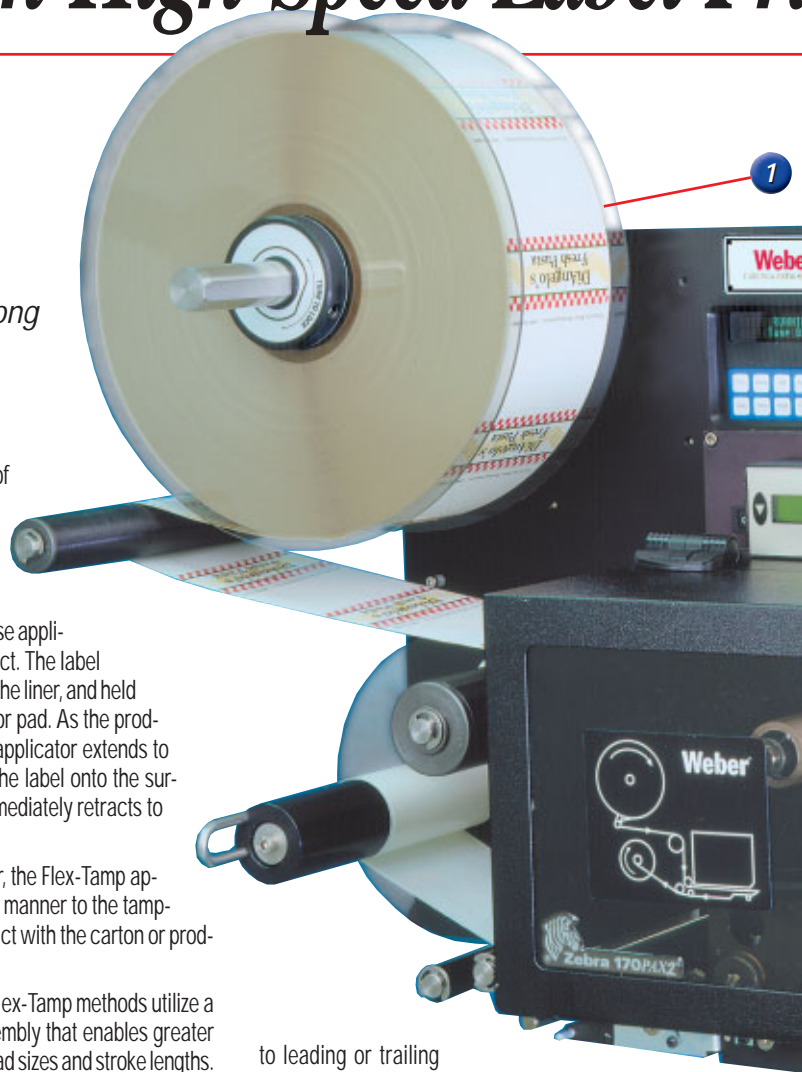
Both the tamp-blow and Flex-Tamp methods utilize a newly engineered tamp assembly that enables greater versatility in choosing tamp pad sizes and stroke lengths.

All three methods of application are accurate to within ± 0.03 " and are capable of applying labels to the tops, bottoms, or sides of cartons or products.

Applicator pads are available in a range of standard sizes. And to make the system even more versatile, an optional quick-change tamp pad is available. In just a few seconds, the tamp pad can be removed and another slid into place to accommodate a different size label.

In addition, a secondary wipe station is available that enables a single label to be securely wiped around and affixed to the trail panel of a carton immediately following application to the side panel. It will handle labels up to 7.0" wide and 9.0" long.

For additional versatility, an optional 90-degree swing tamp can be used to apply labels



to leading or trailing carton panels. Available for tamp-blow application of labels up to 25 square inches; quick-change pads not available.

Versatile Options

Other options to maximize versatility include a product height sensor, which allows the system to label items of varying height running along the same conveyor. Multiple I/Os permit operation in conjunction with PLCs, scales, or a PC.

Label and printer ribbon strobe light alerts and an optional label-on-pad sensor further enhance the system's operation. An adjustable stand can be added to orient the Model 5200 Series in virtually any position.

The units also include a built-in connection for Weber's LegiLink terminal, which enables the remote input of label information.

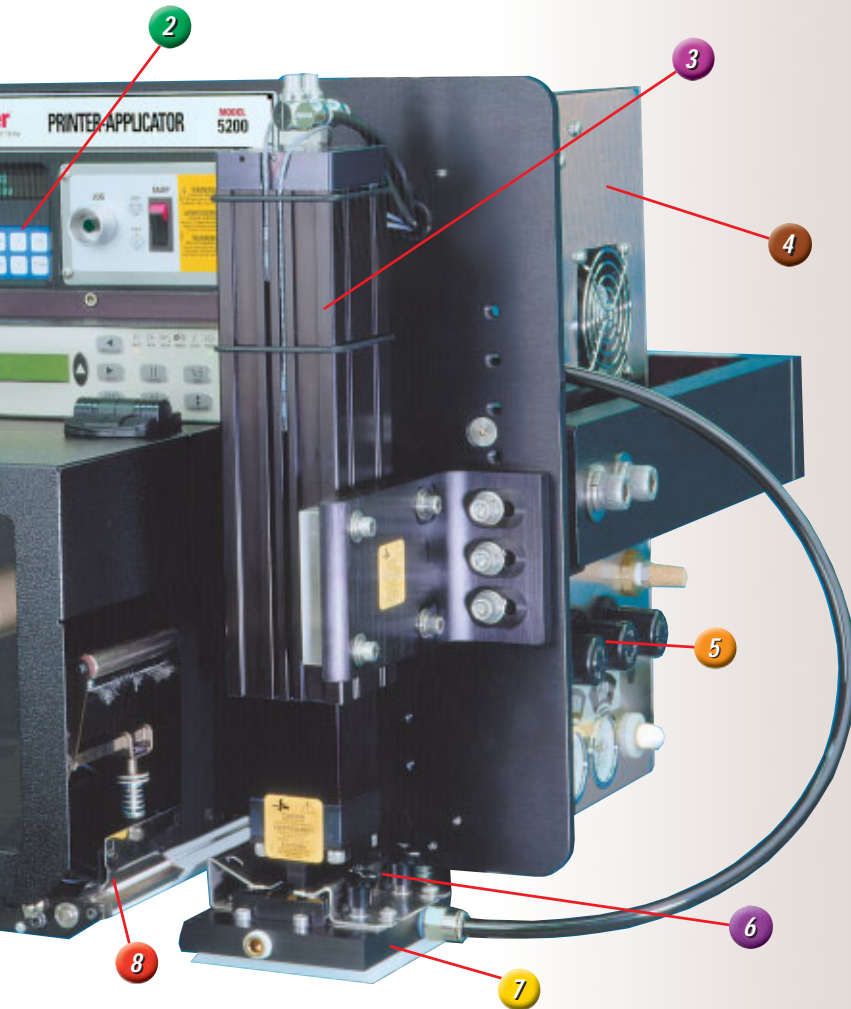
The Model 5200 Series is constructed to withstand harsh industrial environments. Vital electronic compo-



www.webermarking.com

Model 5200 features

Printer-Applicators.



1 High-volume label supply handles pressure-sensitive labels on rolls up to 12.0" in diameter.



2 Exterior microprocessor controller for fast set-up and adjustment.



3 Improved tamp assembly allows the unit to be set-up and adjusted quickly and easily.



4 Stainless steel casement houses and protects critical electronics.



5 Easy-access controls and gauges enable operator to adjust and monitor air supply.



6 Quick-change tamp pad allows for easy replacement to accommodate different label sizes.



7 Non-contact or gentle-contact application accurate to ± 0.03 ".



8 Choose 203- or 300-dpi print engines up to 6.0" wide.

nents are safely housed in a corrosion-resistant stainless steel casement, with an anodized aluminum faceplate facilitating integration of the print engine, label unwind/rewind, and other components.

The system is simple to use, as well. The exterior microprocessor controller and tamp assembly allow the unit to be set-up and adjusted quickly and easily.

Easy Operation

All Model 5200 Series printer-applicators can be operated using Weber's exclusive Print-ApPLY software. This Windows-based software package simplifies label design, editing, and printing to help you instantly create great looking labels.

Additionally, Weber manufactures pressure-

sensitive label materials suitable for a vast range of applications. Labels are available in a multitude of stock sizes, or can be custom-designed and preprinted to contain permanent information. Weber also provides thermal-transfer ribbons compatible with print-apply use.

More information

Weber's direct account representatives can answer all your labeling questions. And our Model 5200 Series is fully supported by a nationwide network of service representatives, each highly trained to maintain systems and ensure peak operating efficiency.

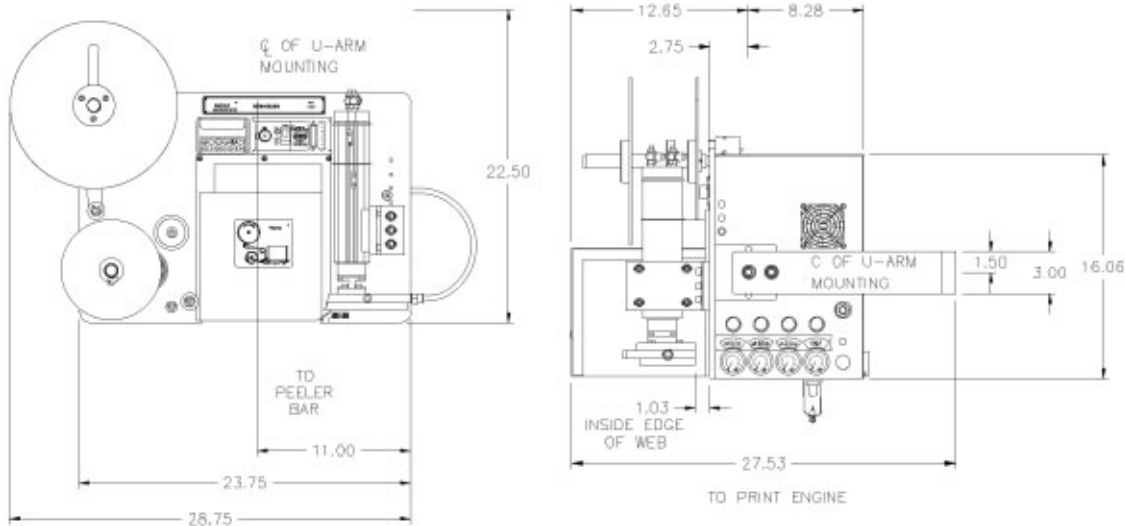
For further information regarding the Model 5200 Series, including a no-obligation demonstration, please call us at 1.800.843.4242. Or send an e-mail to info@webermarking.com.

Weber®

LABELING & CODING SOLUTIONS

Model 5200 Series

Label Printer-Applicator Specifications



Dimensions

28.75"L x 27.52"W x 22.5"H
(73cm x 69.9cm x 57.2cm)

Weight

150 lbs. (68kg)

Electrical

115 VAC, 60 cycle, 5 amps; overload protection built in;
220 VAC, 50 cycle optional

Communication Interface

RS-232-C; Centronics compatible

Air Requirements

3 cfm at 90 psi

Product Sensing

Photoelectric

Printing Methods

Direct-thermal and thermal-transfer

Print Resolution

203- or 300-dpi, dependent upon model selected

Print Area

Datamax PE42:
4.1"W x 6.0"L (104mm x 152.4mm)
Sato 8460SE:
6.0"W x 6.0"L (152.4mm x 152.4mm)
Sato 8485SE:
5.1"W x 6.0"L (129.5mm x 152.4mm)
Sato 8490SE:
4.4"W x 6.0"L (112mm x 152.4mm)
Zebra 112:
4.1"W x 6.0"L (104.0mm x 152.4mm)
Zebra 113:
4.1"W x 6.0"L (104.0mm x 152.4mm)
Zebra 172:
6.0"W x 6.0"L (152.4mm x 152.4mm)
Zebra 173:
6.0"W x 6.0"L (152.4mm x 152.4mm)

Print Speed & Resolution

Datamax PE42:
Up to 10.0" per second (254mm) @203-dpi
Sato 8460SE:
Up to 8.0" per second (203mm) @203-dpi
Sato 8485SE:
Up to 12.0" per second (305mm) @203-dpi
Sato 8490SE:
Up to 8.0" per second (203mm) @300-dpi
Zebra 112:
Up to 12.0" per second (305mm) @203-dpi
Zebra 113:
Up to 8.0" per second (203mm) @300-dpi
Zebra 172:
Up to 12.0" per second (305mm) @203-dpi
Zebra 173:
Up to 8.0" per second (203mm) @300-dpi

Label Sizes

Datamax PE42:
Max 5.0"W x 6.0"L (127mm x 152.4mm)
Min 1.0"W x 1.0"L (25.4mm x 25.4mm)
Sato 8460S:
Max 5.0"W x 6.0"L (127mm x 152.4mm)
Min 1.0"W x 1.0"L (25.4mm x 25.4mm)
Sato 8485SE:
Max 5.25"W x 6.0"L (133.3mm x 152.4mm)
Min 1.0"W x 1.0"L (25.4mm x 25.4mm)
Sato 8490SE:
Max 5.25"W x 6.0"L (133.3mm x 152.4mm)
Min 1.0"W x 1.0"L (25.4mm x 25.4mm)
Zebra 112:
Max 4.5"W x 6.0"L (114mm x 152.4mm)
Min 0.5"W x 1.0"L (13mm x 25.4mm)
Zebra 113:
Max 4.5"W x 6.0"L (114mm x 152.4mm)
Min 0.5"W x 1.0"L (13mm x 25.4mm)
Zebra 172:
Max 6.0"W x 6.0"L (152.4mm x 152.4mm)
Min 2.0"W x 1.0"L (50.8mm x 25.4mm)
Zebra 173:
Max 6.0"W x 6.0"L (152.4mm x 152.4mm)
Min 2.0"W x 1.0"L (50.8mm x 25.4mm)

Label Roll Size

Maximum diameter 12.0" (305mm)

Labeling Speed

Contingent upon label size/content

Label Placement

Accurate to $\pm 0.03"$ (.76mm) when labels are produced to specifications and product handling is controlled and consistent

Labels

Die-cut, waste removed with 0.125" (3mm) minimum separation between labels in running direction and 0.125" (3mm) maximum web over label width; direct or thermal-transfer

Labeling Software

Weber Print-Apply software

Print Characters & Bar Codes

Text: Selection of fonts, including OCR-A & B representation
Bar Codes: UPC-A/E, EAN-8/13, Code 39, I 2 of 5, Code 128, Codabar, MSI, 2 of 5, Code 93, UPC Bookland, Matrix 2 of 5, Postnet, UCC/EAN 128, PDF-417, Maxicode, Data Matrix
(Text and bar codes can be rotated 360 degrees; horizontal and vertical character expansion)

Optional Features

- Adjustable Stand
- LegiLink Terminal
- Quick-change tamp pad
- Enhanced I/O
- Label-on-pad sensor
- Product presence sensor
- Product height sensor
- Secondary wipe station
- Swing tamp

Weber Marking Systems, Inc.

Corporate Headquarters

711 W. Algonquin Road
Arlington Heights, IL 60005-4457
Phone: 847.364.8500
Fax: 847.364.8575
E-Mail: info@webermarking.com
www.webermarking.com

Canada

6180 Danville Road
Mississauga, Ontario L5T 2H7
Phone: 905.564.6881
Fax: 905.564.6886
E-Mail: info@webermarking.ca
www.webermarking.ca

United Kingdom

Macmerry Industrial Estate
Tranent, East Lothian EH33 1HD
Scotland
Phone: 44.18.756.11111
Fax: 44.18.756.13310
E-Mail: sales@weber.co.uk
www.weber.co.uk

Germany

Postfach/Box 0154
Honnefer Str. 41
D-53572 Unkel/Rhein
Phone: 49.2224.77080
Fax: 49.2224.770820
E-Mail: info@bluhmsysteme.com

Thailand

10/106 Moo 7 Soi Wat Hua Krabue
Bangkhuntien Road
Takham, Bangkhuntien, Bangkok
10150, Thailand
Phone: 66.2.897.4871
Fax: 66.2.897.4272
E-Mail: weber@bkk.foxinfo.co.th

Belgium

Weber Marking Systems NV/SA
Loten 1
B-4700 Eupen - Belgium
Phone: 32.87.593979
Fax: 32.87.593970
E-Mail: mail@webermarking.be

Denmark

Weber Marking Systems A/S
Nordkrogen 7
DK-7300 Jelling, Denmark
Phone: 45.75.87.26.00
Fax: 45.75.87.26.10
E-Mail: sales@norconweber.dk

Netherlands

Weber Etiketten BV
Steurstraat19,
1317 NZ Almere, Nederland
Phone: 036.5345254
Fax: 036.5345659
E-Mail: etiketten@weber.nl
www.weber.nl

Ireland

Weber Marking Systems Ireland
61 Irish Street, Enniscorthy
County Wexford, Ireland
Phone: 353.54.33.778
Fax: 353.54.33.284
E-Mail: weberireland@eircom.net

